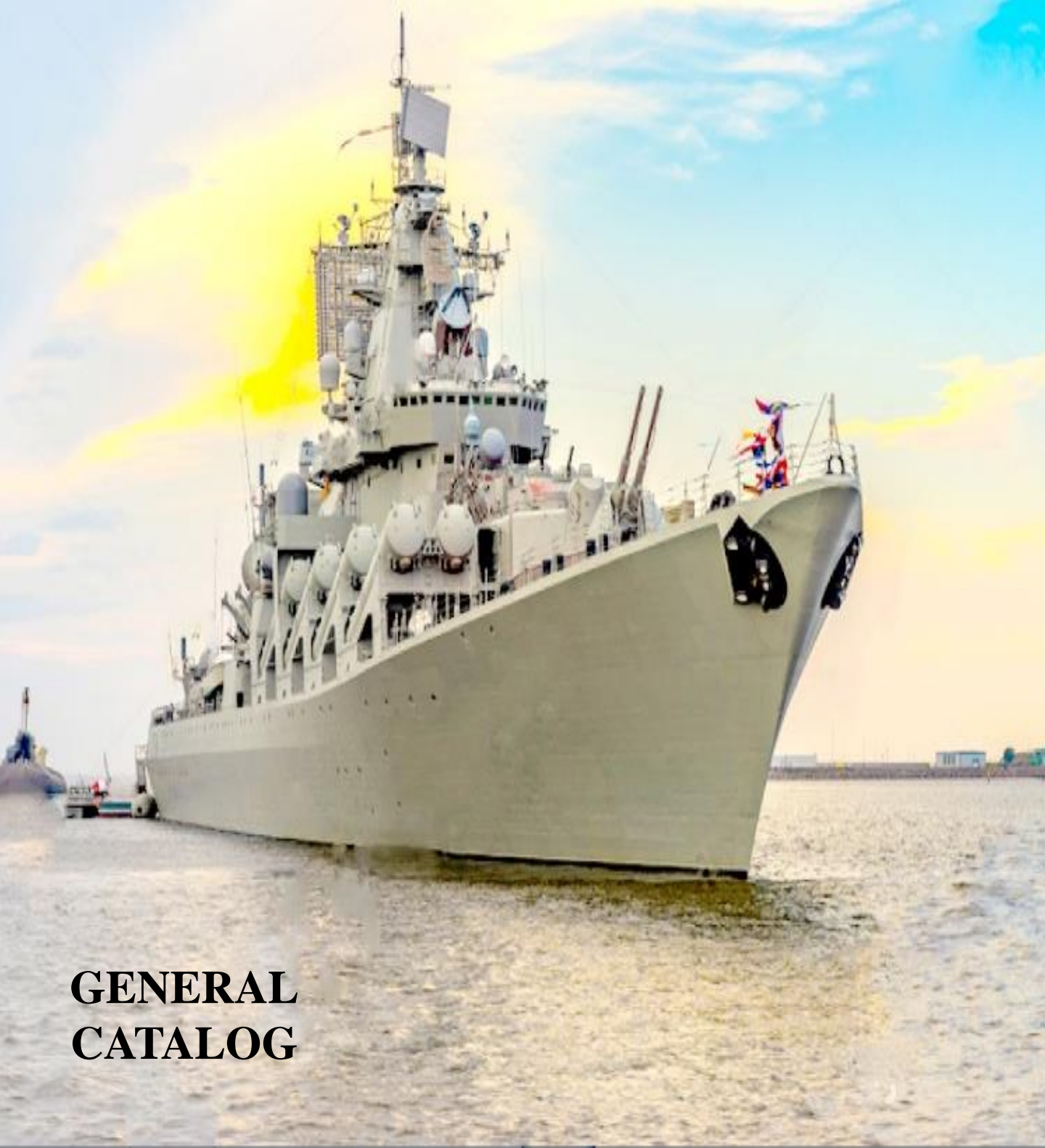


**VISHIP**



**MARINE DEVELOPMENT CO., LTD**



**GENERAL  
CATALOG**



**VISHIP MARINE DEVELOPMENT CO., LTD**

# CONTENTS

## **I. INFORMATIONS COMPANY**

## **II. VISION**

## **III. MISSION**

## **IV. CORE VALUES**

## **V. PROPULSION SYSTEM**

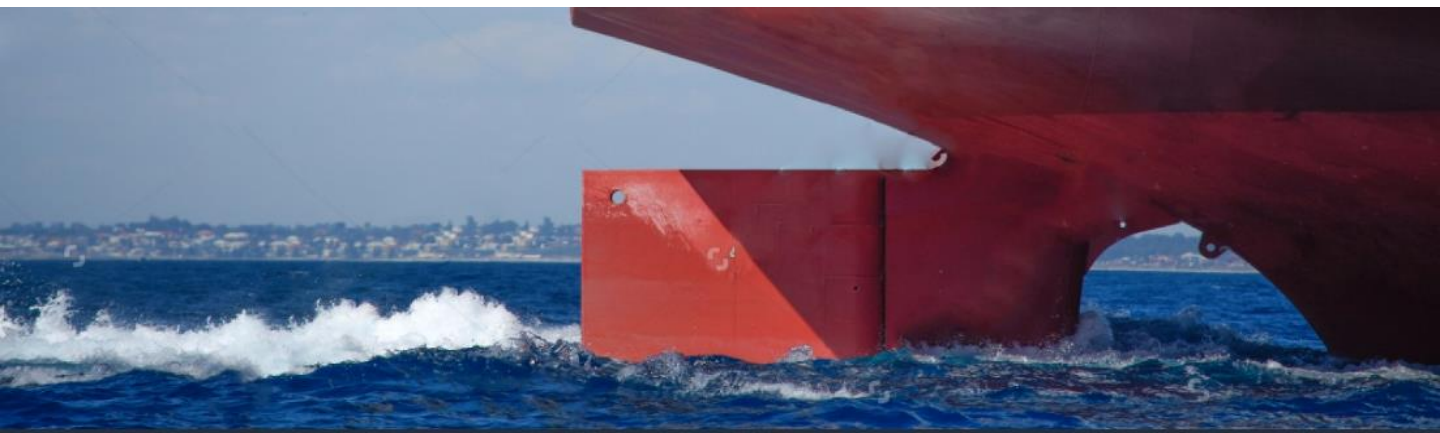
## **VI. DECK MACHINERY**

## **VII. ELECTRICAL EQUIPMENT**

### ***I. INFORMATIONS***

*Established in 2011, Viship located in Hai Phong, Vietnam. With the advantage of sea, air and a team of experienced staff in management, sales, trading, technology and finance, we specialize in manufacturing marine equipment and are confident of being a distribution agent of many big marine equipment suppliers in the world. We supply all products that have been certified by high class associations from USA, Europe, Korea, Japan and China such as DNV, NK, KR, RINA, ABS, BV, GL , LR, CCS, IRS, VR. We have been giving the best solutions to build the connection between manufacturers and customers.*

.







## **II. VISION**

- *Our goal is to expand our business as a professional and pioneer corporation in the field of Investment, Trade & Service, and have influence in the domestic and international market.*
- *We aim to fully development of investment, sales, import-export, Mergers & Acquisitions activities. Our goal is to become a leading company in Vietnam and reaching out to foreign markets. In addition, sustainable development offers flexible solutions.*

## **III. MISSION**

- *For customers: Respect and commit to providing customers with the best products and services.*
- *For partners: Building relationships based on trust, and sustainable cooperation for development.*
- *For employees: Build a friendly, professional, dynamic and creative working environment where everyone can develop their abilities.*
- *For society: Always being aware of Viship's benefits associated with social benefits and contributing to society is part of Viship's responsibility to the community.*

Our greatest goal is *"Developing Marine is our future".*

## **VI. CORE VALUES**

- *Creativity is foundation of development.*
- *People are the main factor for success.*
- *Honesty and team spirit is our motto.*
- *Breakthrough and differentiation are competitive advantage.*



# V. PROPULSION EQUIPMENT

## 1. Main Engine

\* **Origin:** Japan, USA, Korea, Europe

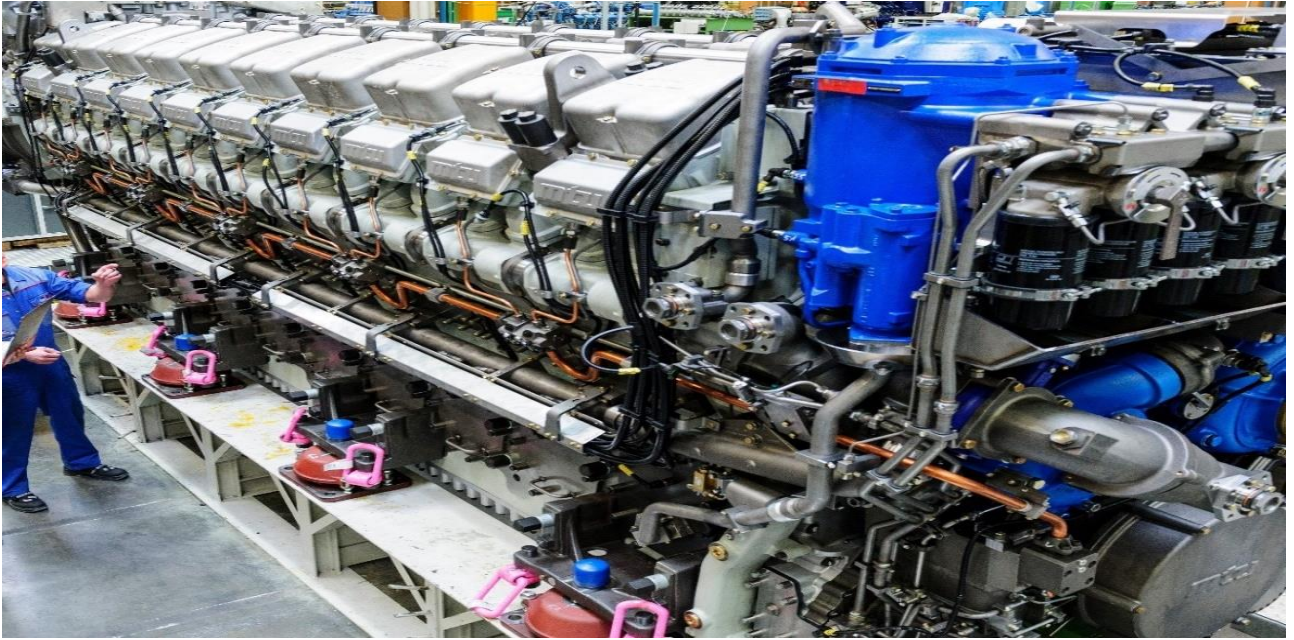
\* **Dimension:**

- VISHIP adopts MTU, YANMAR, HYUNDAI, CUMMINS, DAIHATSU, CATERPILAR marine engines with power 45-8000 KW, with many years of marine engine experience and introduction of advanced engine technologies from home and abroad. The development of the engine fully considers the needs of different markets and the common working conditions, and has low fuel consumption, low vibration, low emission, high reliability, high power and high adaptability. The engine layout is symmetrically arranged, simple in operation, convenient to use and maintain, and is an ideal power for offshore and inland river fishing vessels, transport vessels, engineering vessels and Navy vessel.





# V. PROPULSION EQUIPMENT



## \* Specifications:

- Power (kW): 45 to 8000 kW
- No. of cylinders: 6/8/12 cylinder
- Reated engine speed: 600 to 1800 rpm
- Stroke: 2 cycle, 4 cycle
- Weight (kg): 575 to 20500 kg

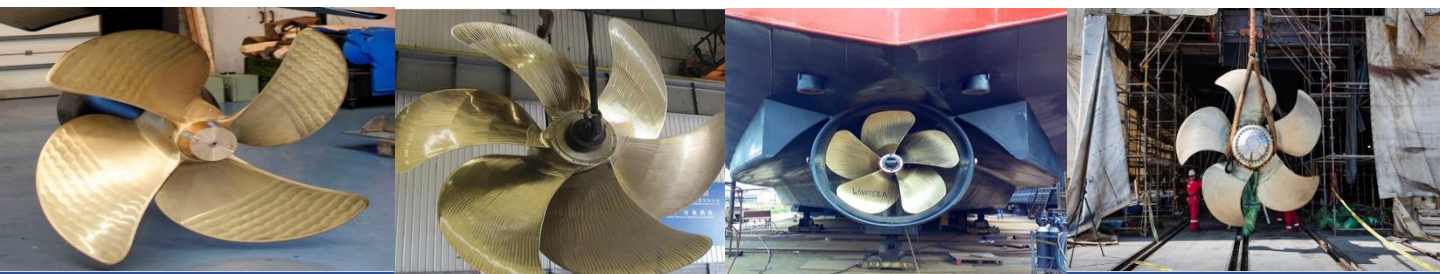
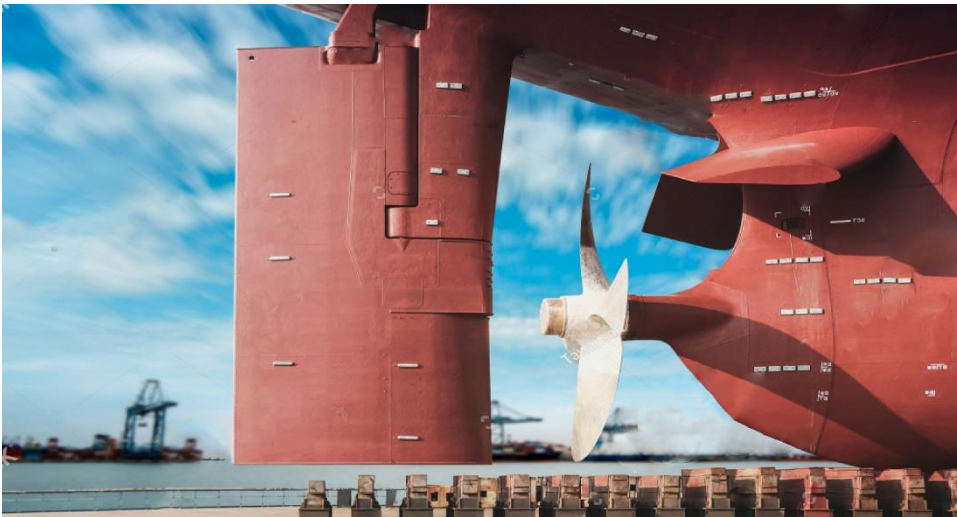




# V. PROPULSION EQUIPMENT

## 2. Propeller

- \* **Origin:** Viet Nam, Japan, England
- \* **Material:** HBSC1/ ALBC3
- \* **Diameter:** from 150mm to 450mm
- \* **Specification:** Controllable pitch propellers; 02, 03, 04, 05, 06 fixed pitch Type





# V. PROPULSION EQUIPMENT

## 3. Propeller shaft

\* **Origin:** Viet Nam

\* **Specification:**

- Diameter: from 50 to 350mm

- Length: upto 12m

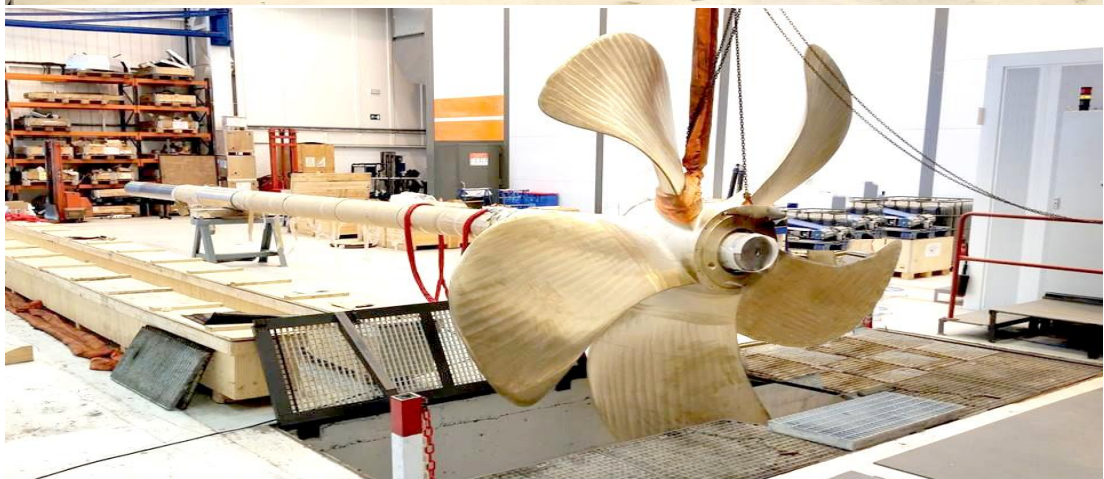
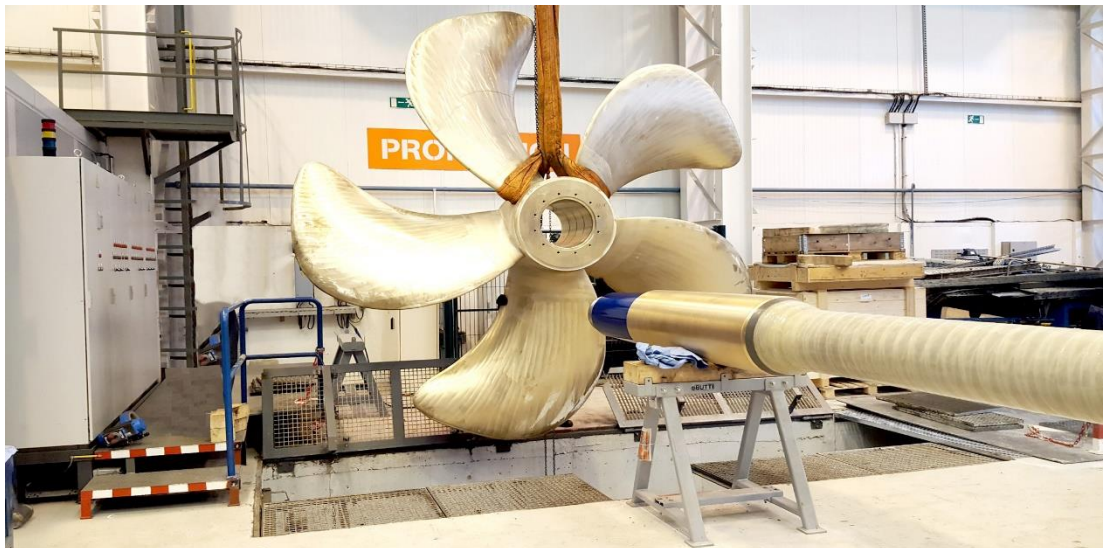
- Material:

+, **Forget round bar** SF50, SF55, SF60, SF65, ...

+, **Stainless round bar:** SUSF 304, SUSF 316, Duplex 2205, SUSF 630

\* Use: ACM- england, Orkort, Thordon- Canada, Venscoute- South Africa

\* Certificate: LR, BV, NK, VR, BKI,...



## V. PROPULSION EQUIPMENT





# V. PROPULSION EQUIPMENT

## 4. Bow thruster

\* **Origin:** EU, USA, ASIAN

\* **Type:** Horizontal input shaft, Vertical input shaft



Electric driven		Hydraulic driven	
Rated power (KW)	Rated Thrust (KN)	Rated power (KW)	Rated Thrust (KN)
35	4.9	35	4.9
45	6.3	45	6.3
60	8.4	60	8.4
90	13	90	13
120	17	120	17
150	21	150	21
220	31	220	31
290	40	290	40
360	50	360	50
400	56	400	56
480	67	480	67
570	80	570	80
750	105	-	-
1000	140	-	-
1300	182	-	-



# VI. ENGINE ROOM EQUIPMENT

## 5. Generator

\* **Origin:** USA, Japan, Korea, Euro, China

\* **Dimension:**

- Power (kWe): 20 to 1240 kWe
- Hezt: 50 or 60 Hz
- Voltage: 380/400V/415/416/440/460/480V
- Rated engine speed: 1500 to 1800 rpm
- Stroke: 2 cycle, 4 cycle





# VI. ENGINE ROOM EQUIPMENT

## 6. Air compressor

\* **Origin:** Europe, Korea

\* **Specifications:**

- Pressure: 4 - 40 Mpa
- Capacity: 4.3—610m<sup>3</sup>/hr
- Speed: 1200- 1800 rpm
- Cooling: Fresh water, Air
- Power: 1.5—132kW



# VI. ENGINE ROOM EQUIPMENT

## 7. Air receiver

\* **Origin:** Vietnam, China, Korea,...

\* **Description:** Bottles complete wind include a pressure gauge, a safety valve and a drain hose by hand

- Volume (m<sup>3</sup>): 0.3 to 20 m<sup>3</sup>
- Flow (cfm): 110 to 10000 cfm
- Diameter (mm): 600 to 2200 mm
- Height (mm): 830 to 4600 mm
- Standard design pressure: 9.5 kg / cm<sup>2</sup>
- Test pressure: 15 kg / cm<sup>2</sup>
- Material: IS 2062, SS-304, SA-515 Gr-60/70





# VI. ENGINE ROOM EQUIPMENT

## 8. Pump

- \* **Origin:** Japan, EU
- \* **Capacity range:** to 2 up to 4000 m<sup>3</sup>/ h
- \* **Pressure range:** to 20 up to 150 mWC
- \* **Type of pump:** Centrifugal, Gear, Screw, Piston, Water pump, Oil pump, ...



Vertical pump



Centrifugal pump

# VI. ENGINE ROOM EQUIPMENT

## 9. Oil water separation machine

- \* **Origin:** EU/ ASIA
- \* **Dimension:**
- Cability: 0.25 to 5 m<sup>3</sup>/h



Main parameters									
Type	Type-0.25	Type-0.5	Type-1.00	Type-1.50	Type-2.00	Type-2.50	Type-3.00	Type-4.00	Type-5.00
Rating/maximum Capacity (m <sup>3</sup> /h)	0.25	0.5	1	1.5	2	2.5	3	4	5
Power of pump (kw)	0.37	0.55	0.75	1.1	1.1	1.5	1.5	2.2	2.2
15ppm Bilge Alarm	included	included	included	included	included	included	included	included	included
Applicable ship vessel	< 1000 DMT	1000-5000 DMT	5-10 KDW T	10-30 KDW T	30-50 KDW T	50-100 KDW T	100-200 KDW T	100-300 KDW T	300 KDW T above





# VI. ENGINE ROOM EQUIPMENT

## 10. Oil filter equipment

\* **Origin:** EU/ ASIA

\* **Specifications:**

- Fuel delivery: 0.6 ~ 3.0 m<sup>3</sup>/h
- Fuel Pressure: 0.5 ~ 1.0 MPa
- Out viscosity: 10 ~ 12 Cst
- Vapor pressure: 0.7 MPa



# VI. ENGINE ROOM EQUIPMENT

## 12. Sewage treatment plant

\* **Origin:** EU/ ASIA

\* **Specifications:**

- Rated capacity: 6 ~ 300 persons
- Electricity: AC 380V/50Hz/3 $\phi$ ,  
AC 440 V/60Hz/3 $\phi$
- Power: 1.5 ~ 3.0 (kw)

\* **Discharge Water Quality**

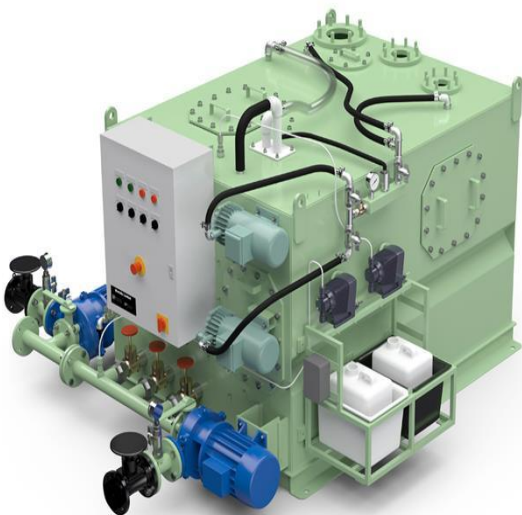
M. P. N:  $\leq 100/100\text{MI}$

TSS:  $\leq 35 \text{ mg/L}$

BOD5:  $\leq 25\text{mg/L}$

COD:  $\leq 125\text{mg/L}$

PH: 6~8.5





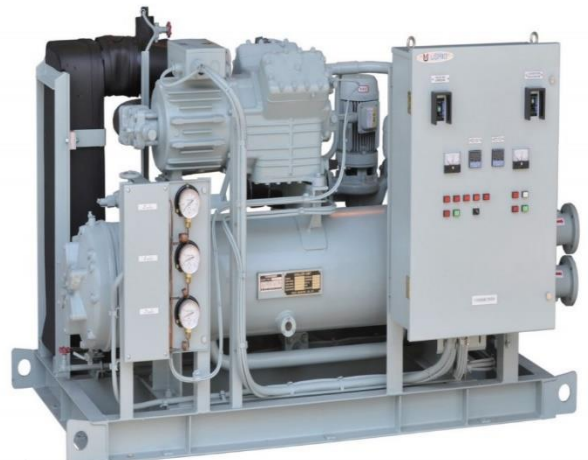
# VI. ENGINE ROOM EQUIPMENT

## 13. Air conditioning, refrigeration

\* **Origin:** USA, EU, ASIAN

\* **Dimension:**

- Cooling Capacity: 5.2 – 18.5 kW
- Max ambient temp.: 45°C
- Electrical input: 230V/ 50Hz/ Simple phase
- Noise level: Indoor unit: < 40 dB
- Air flow rate: 425 CFM or more
- Fan speed: 3 steps
- Function modes: auto/ cool/ fan/ dry- shall have power saving mode, temperature setting option should be available
- Length of tubing: 5 m or as per the installation requirement
- Remote control: Wireless with LCD display
- Refrigerant type: R-22 or R-410A or any other refrigerant as per current industry standard



# VI. ENGINE ROOM EQUIPMENT

## 14. Hydrophore unit

\* **Origin:** Viet Nam, China, Korea, Euro,...

\* **Dimension:**

- Use for fresh water, sea water
- Material: Stainless steel
- Volume (m<sup>3</sup>): 0.2 to 3 m<sup>3</sup>
- Working pres. (Mpa): 0.4 Mpa
- Test pres. (Mpa): 0.66 Mpa
- Take off pres. of safety valve (Mpa): 0.42 Mpa
- Working temp.( °C): 0~45 °C
- Flow rate ( m<sup>3</sup>/h): 3~ 10 m<sup>3</sup>/h
- Pump head (m): 40 m
- Power (kW): 2.2 ~ 4 kW





# VI. ENGINE ROOM EQUIPMENT

## 15. CO2 Fight fighting system

\* **Origin:** Korea, Vinmex, Viet Nam

\* **Dimension:**

- The system extinguishes the fire by means of CO2.
- The system consists essentially of CO2 cylinders, main isolating valve, manifold, CO2 nozzles in compartment protected space, and pipe lines connecting these main parts.
- The system is to be designed by the required discharging time, CO2 cylinders quantity and which are stored in a independent CO2 room.
- For further security in ship's cargo hold, a smoke detection system can be combined with the CO2 system. CO2 gas, the fastest and most efficient extinguishing agent against fires in protected spaces, suffocates the fire within designated time and minimize the damage in protected spaces.



# VI. ENGINE ROOM EQUIPMENT

## 16. Ballast water system

- \* **Origin:** Korea, China, Viet Nam, EU
- \* **Description:**
  - Rated Voltage: 220/240~380/440V AC - 50/60 Hz
  - Treatment Capacity: 35 ~ 1500 m3/h



DESCRIPTION	CC-340	CC-500	CC-750	CC-1000	CC-1500	CC-2100
Max. flow m3/h Ballast	250	340	500	750	1000	1500
Max. flow m3/h De-Ballast	340	500	750	1000	1500	2100
Max power kW*	49	78	93	131	169	245
Min power kW**	9.8	15.6	18.6	26.2	33.8	49
Backflush/stripping pump capacity m3/h	TBD	45 – 90	45 - 90	45 - 90	90 - 130	90 - 130





# VI. ENGINE ROOM EQUIPMENT

## 17. Incinerator

\* **Origin:** EU, China, USA

\* **Dimension:**

- Approval: ABS, NK, LR,...
- Incinerator in compliance with IMO MEPC 76 and amendments IMO MEPC 93, IMO MEPC 244, for burning sludge and burnable solid waste.

\* **Features:**

- Wide range of capacities from 100.000 to 1.000.000 kcal/hr



# VI. ENGINE ROOM EQUIPMENT

## 17. Fresh water generator

\* **Origin:** EU/ USA/ CHINA

\* **Dimension:**

- Capacity: up to 1500 ton/day
- Energy recovery available, making power consumption less than 3 kWh/m<sup>3</sup>
- HMI available
- Heavy duty units for offshore, Navy vessels, merchant ships, super-yachts and mega-yachts, workboats, cruise ships
- Skid mounted plants
- Available in any three- phase current





# VI. ENGINE ROOM EQUIPMENT

## 18. Valve

\* **Origin:** Korea, China, EU

\* **Dimensions:**

- Body: Steel, Bronze, Iron material
- Size: 15A- 450A
- Standard: JIS Marine valve
- Use: Marine vessel

\* **Type:**

- + Globe valve,
- + Angle valve,
- + Screw down check globe valve,
- + Lift check globe valve,
- + Lift check angle valve,
- + Swing check valve,
- + Gate valve,
- + Globe hose valve,
- + Strainer,
- + Mud box,
- + Can water filter,
- + Simplex oil strainer,
- + Air vent head,
- + Ball valve,
- + Butterfly valve,
- + Safety valve,
- + Pressure reducing valve,
- + Angle storm valve,
- + Marine sight glass



# VI. ENGINE ROOM EQUIPMENT

## 19. Coolers

\* **Origin:** USA, EU, CHINA

\* **Type:** plate condenser, tube condenser

\* **Specifications:**

- Flow ranges: 0,5 - 4600 m<sup>3</sup>/h
- Max work pressure: 25 bar
- Temp. range: -40° C to +180° C
- Connections: DN25- DN500 weld neck, flange or threaded





# VI. ENGINE ROOM EQUIPMENT

## 20. Ventilation fan

\* **Origin:** Asian/ EU/ USA

\* **Type:**

- Axial flow fan

+ Impeller diameter: 300 ~ 2,000

mm

+ Power: 0.4 ~ 110 kW

+ Max. air flow rate: 210,000 m<sup>3</sup>/h

- Centrifugal fan

+ Impeller diameter: 250 ~ 630 mm

+ Power: 0.4 ~ 7.5 kW

+ Max. air flow rate: 10,000 m<sup>3</sup>/h

- Special axial flow fan

+ Impeller diameter: 300 ~ 1,600

mm

+ Power: 0.4 ~ 75 kW

+ Max. air flow rate: 144,000 m<sup>3</sup>/h

\* **Specifications:**

- AC motor of 230V, 440V, 380v, 415v, 480v.

- The frequency can be 50Hz or

60Hz Swivel: 360° throughout left-right



# VI. ENGINE ROOM EQUIPMENT

## 21. External fire fighting pump

\* **Origin:** Asian/ EU/ USA

\* **Type:**

- Electric type
- Hydraulic type
- Manual type

\* **Specifications:**

- Water delivery: 10,000-40,000 liters/ minute.
- Discharge press: 10-20kg/cm<sup>2</sup>
- Throw range: 100-200 meters
- Swivel: 360° throughout left-right
- Topping: 75° upward  
30° downward





# VII. HULL & DECK EQUIPMENT

## 22. Steel plate

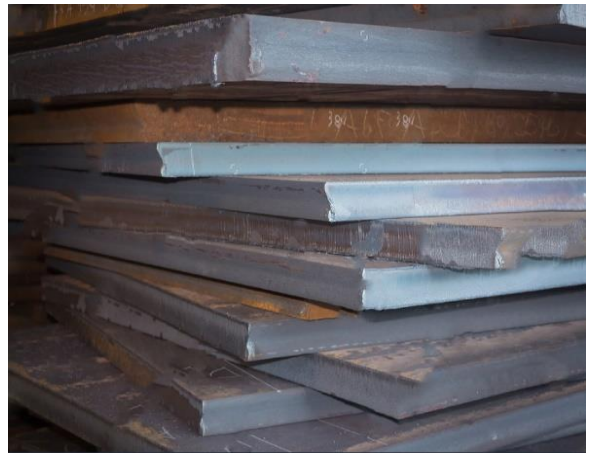
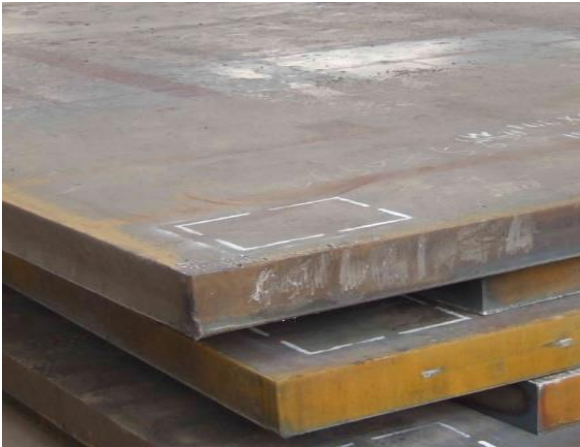
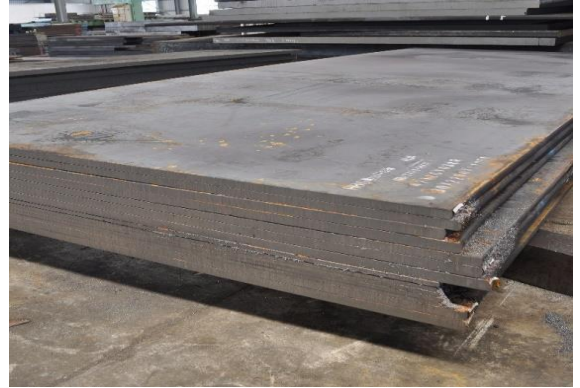
\* **Origin:** China, Korea, Japan

\* **Dimension:**

- Application: widely used in Maritime
- Steel grade: A, B, C, D, E, AH32, AH36, ...

\* **Specifications:**

- Thickness: 3mm- 200mm
- Width: 30mm- 4000mm
- Length: 1000mm- 12mm
- Standard: ASTM, EN10025, JIS, GB, DIN
- Certificate: BV, LR, DNV, CCS, etc.



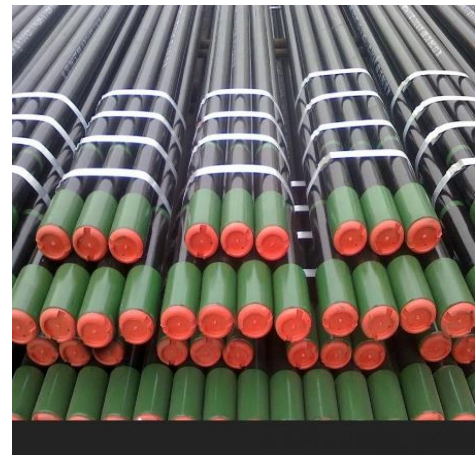
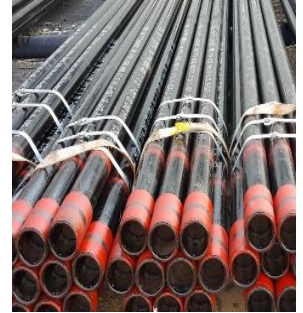
# VII. HULL & DECK EQUIPMENT

## 23. Steel pipe

\* **Origin:** China, Korea, Japan

\* **Dimension:**

- Outer diameter: 5A to 500 A
- Wall thickness: 1.5 to 45 mm
- Specification: API 5L, ASTM A106, ASTM A179, ASTM A192, ASTM A333-A336, EN1021, DIN1629, JIS STPG370.
- Length: 6m, 9m or other length based on demand
- Certificate: BV, DNV, CCS, LR, ect.





# VII. HULL & DECK EQUIPMENT

## 24. Stainless pipe

\* **Origin:** China, Korea, Japan

\* **Dimension:**

- Outer diameter: 10.3 to 812.8 mm
- Wall thickness: 1.5 to 45 mm
- Specification: SUS 304; SUS 316L, TP 316L,...
- Length: 6m, 9m or other length based on demand
- Certificate: BV, DNV, CCS, LR, ect.



# VII. HULL & DECK EQUIPMENT

## 25. Elbow

\* **Origin:** China, Korea

\* **Dimension:**

- Material: Steel, SUS
- Standard: carbon, ASTM/ ASME A234 WPB, WPC, TP 316L
- Outer diameter: follow standard JIS, ASTM
- Wall thickness: follow standard JIS, ASTM
- Certificates: BV, LR, CCS, ABS, ect.



## 26. Flange

\* **Origin:** Viet Nam, Korea, China

\* **Dimension:**

- Outer diameter: follow requirement
- Wall thickness: follow requirement
- Standard: JIS, ANSI
- Material: SUS, SUSF, etc.
- Certificate: BV, DNV, CCS, LR, ect.





# VII. HULL & DECK EQUIPMENT

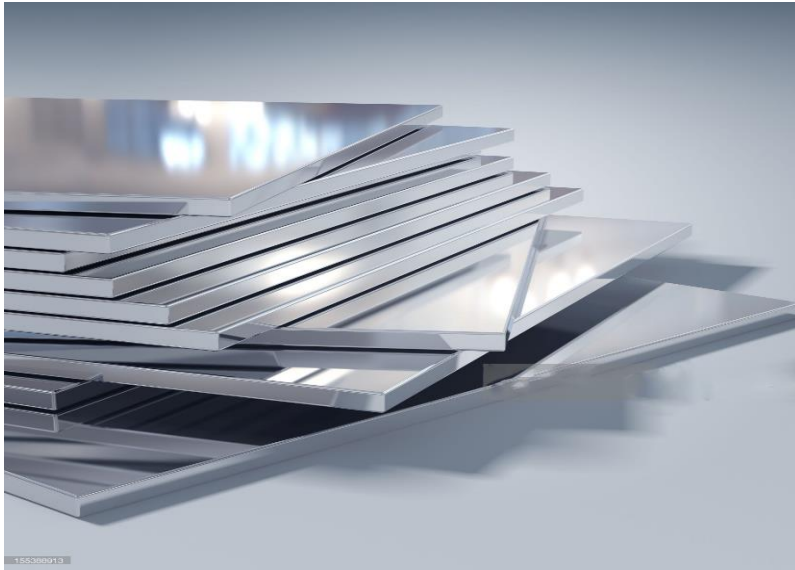
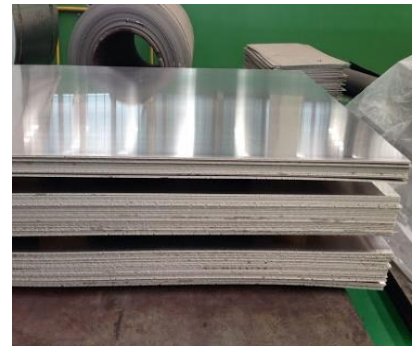
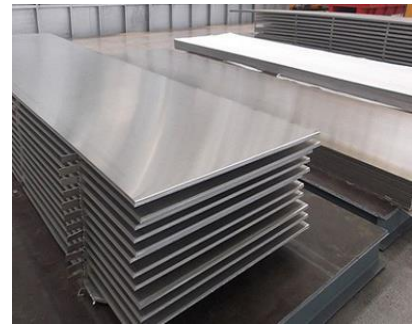
## 27. Aluminium plate

\* **Origin:** Malaysia, EU, China

\* **Certificate:** BV, DNV, CCS, LR, ect.

\* **Dimension:**

- Size ranges: 0.5mm- 100mm \* 1000- 2000mm\* L
- Material: Aliminum plate
- Standards: GB
- Materials: 1050, 1060, 1100, 3003, 3004, 3005, 3104, 5052, 5083, 5005, 5086, 6061, 6063, 6060
- Length: 6m or other length based on demand



# VII. HULL & DECK EQUIPMENT

## 28. Steering gear

- \* **Origin:** Viet Nam, China, Korea, EU
- \* **Dimension:** Steering Gear integrated with the rudder system defines the [complete 'turning mechanism'](#) mandatory for each and every ship irrespective of size, type and operation.
- \* **Type:** Hydraulic and Electro- Hydraulic type
- \* **Specificate:**



No.	Model	Driving torque (T.m)	Power source
1	VM/SG 05-1	0.5	380/440V-50/60Hz
2	VM/SG 10-1	1.0	380/440V-50/60Hz
3	VM/SG 15-1	1.5	380/440V-50/60Hz
4	VM/SG20-1	2.0	380/440V-50/60Hz
5	VM/SG25-1	2.5	380/440V-50/60Hz
6	VM/SG30-1	3.0	380/440V-50/60Hz
7	VM/SG50-1	5.0	380/440V-50/60Hz
8	VM/SG80-1	8.0	380/440V-50/60Hz
9	VM/SG100-1	10.0	380/440V-50/60Hz



# VII. HULL & DECK EQUIPMENT

## 29. Rudder, Rudder stock

- \* **Origin:** Viet Nam, China, EU
- \* **Dimension:** Viship offer to process all kind of rudder system for ship with different requirements and order of customer
- \* **Certificate:** BV, LR, VR, ect.





# VII. HULL & DECK EQUIPMENT

## 30. Crane

- \* **Origin:** Viet Nam, EU, USA, China
- \* **SWL:** 1 ton; 1.5 ton; 2 ton ... 15 ton
- \* **Certificates:** BV, LR, VR, CCS, ect.



# VII. HULL & DECK EQUIPMENT

## 31. Mooring winch

- \* **Origin:** Viet Nam, China, Korea
- \* **Type:** Horizontal mooring winch, Vertical mooring winch



### HORIZONTAL MOORING WINCH

No.	Model		Power (kN)
	Hydraulic	Electric	
1	VM-HHW-5	VM-HEW-5	5
2	VM-HHW-10	VM-HEW-10	10
3	VM-HHW-15	VM-HEW-15	15
4	VM-HHW-20	VM-HEW-20	20
5	VM-HHW-25	VM-HEW-25	25
6	VM-HHW-30	VM-HEW-30	30
7	VM-HHW-35	VM-HEW-35	35
8	VM-HHW-40	VM-HEW-40	40
9	VM-HHW-45	VM-HEW-45	45
10	VM-HHW-50	VM-HEW-50	50
11	VM-HHW-100	VM-HEW-100	100

### VERTICAL MOORING WINCH

No.	Model		Power (kN)
	Hydraulic	Electric	
1	VM-VHW-5	VM-VEW-5	5
2	VM-VHW-10	VM-VEW-10	10
3	VM-VHW-15	VM-VEW-15	15
4	VM-VHW-20	VM-VEW-20	20
5	VM-VHW-25	VM-VEW-25	25
6	VM-VHW-30	VM-VEW-30	30
7	VM-VHW-35	VM-VEW-35	35
8	VM-VHW-40	VM-VEW-40	40
9	VM-VHW-45	VM-VEW-45	45
10	VM-VHW-50	VM-VEW-50	50
11	VM-VHW-100	VM-VEW-100	100



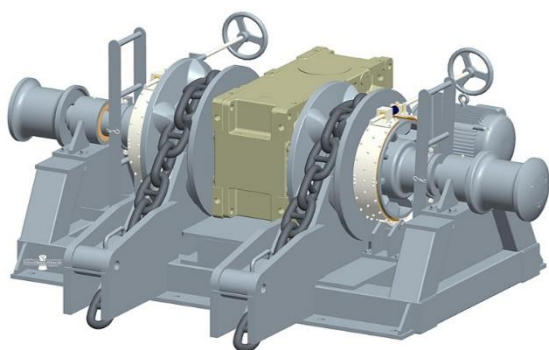
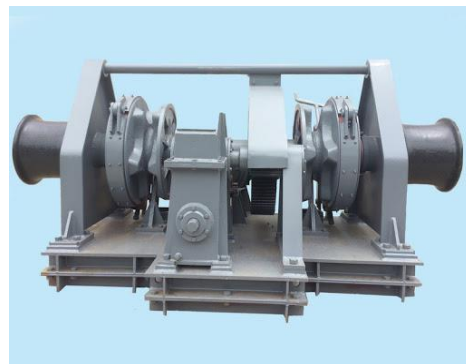
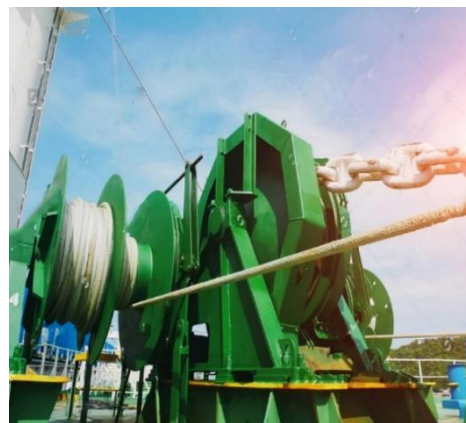
# VII. HULL & DECK EQUIPMENT

## 32. Windlass

\* **Origin:** Viet Nam, China, Korea

\* **Specifications:**

No.	Model	Chain Diameter (mm)	Power source
1	VM-TN-17	17.5	3P, 380/440V, 50/60Hz
2	VM-TN-19	19	3P, 380/440V, 50/60Hz
3	VM-TN-20	20.5	3P, 380/440V, 50/60Hz
4	VM-TN-22	22	3P, 380/440V, 50/60Hz
5	VM-TN-24	24	3P, 380/440V, 50/60Hz
6	VM-TN-26	26	3P, 380/440V, 50/60Hz
7	VM-TN-28	28	3P, 380/440V, 50/60Hz
8	VM-TN-30	30	3P, 380/440V, 50/60Hz
9	VM-TN-32	32	3P, 380/440V, 50/60Hz
10	VM-TN-34	34	3P, 380/440V, 50/60Hz
11	VM-TN-36	36	3P, 380/440V, 50/60Hz
12	VM-TN-38	38	3P, 380/440V, 50/60Hz
13	VM-TN-40	40	3P, 380/440V, 50/60Hz
14	VM-TN-42	42	3P, 380/440V, 50/60Hz
15	VM-TN-44	44	3P, 380/440V, 50/60Hz
16	VM-TN-50	50	3P, 380/440V, 50/60Hz

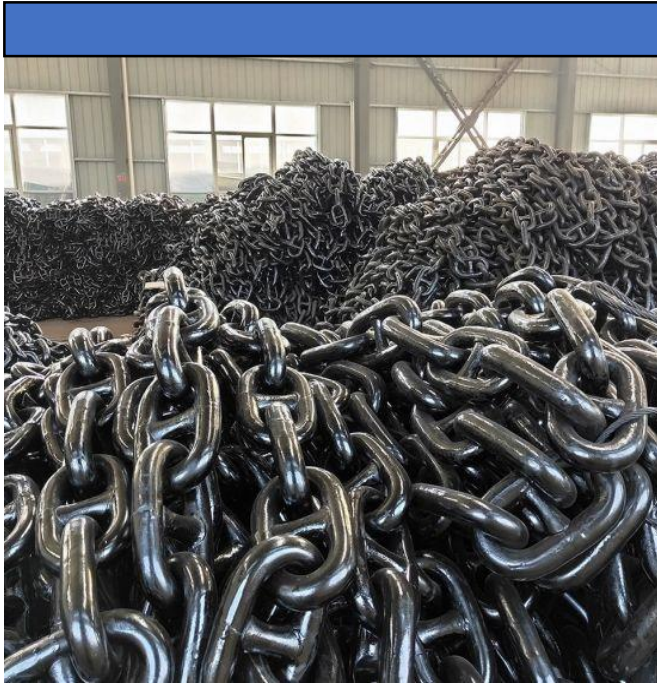




## VII. HULL & DECK EQUIPMENT

### 33. Anchor, Anchor chain

- \* **Origin:** Viet Nam, China, Korea, EU
- \* **Specification:** follow requirement
- \* **Approval:** BV, LR, ABS, CCS, ect.



# VII. HULL & DECK EQUIPMENT

## 34. Life boat, Rescue boat

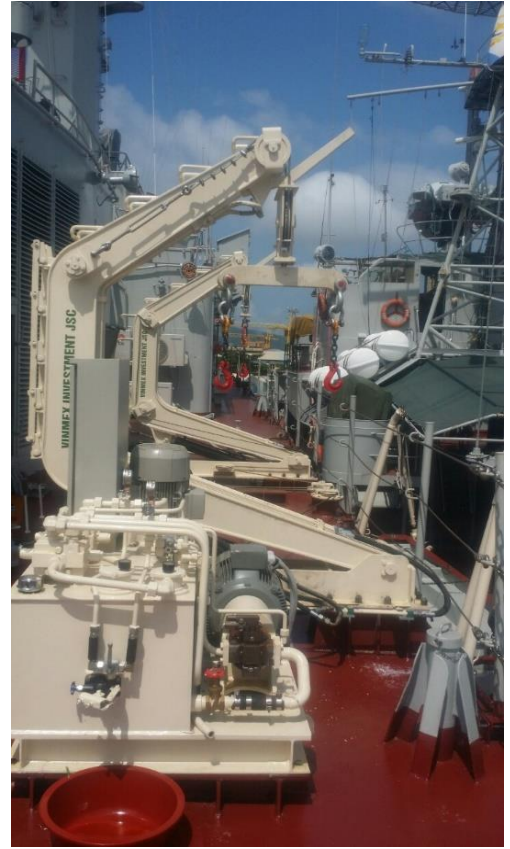
\* **Origin:** China, Viet Nam, EU

\* **Dimension:** Life boat are complied with the lastest requirements and rules of SOLAS and amendment 1996, LSA code.

\* **Approval:** ABS, BV, CCS, DNV, KR, NK, RINA, RMRoS and USCG.

\* **Specifications:**

- Capacity: from 22 up to 150 persons
- Length (m): from 5 to 12.5 m
- Width (m): from 2.20 to 4 m
- Height(m): from 1.10 to 1.25 m
- Speed (knots): >6 knots
- Weight (kg): 4015 to 21645 kg





# VII. HULL & DECK EQUIPMENT

## 35. Life raft

\* **Origin:** China, EU

\* **Dimensions:** Liferaft is used suitable for installing in the vessel sailing on international voyages.

- Approval: CCS, CE/GL, ISO9650-1
- Capacity: 6 to 125 person
- Length (mm): 1956 to 12000 mm
- Width (mm): 1956 to 6100 mm
- Height (mm): 462 to 3650 mm
- Weight (kg): 50 to 750 kg

In accordance with SOLAS



## VII. HULL & DECK EQUIPMENT

### 36. Hatch cover

\* **Origin:** Viet Nam,...

\* **Certificate:** BV, LR, VR, approval type



# VI. ENGINE ROOM EQUIPMENT

## 37. FENDER

\* **Origin:** EU, ASIAN, USA

\* **Approval:** BV, ABS, LR, CCS, etc.

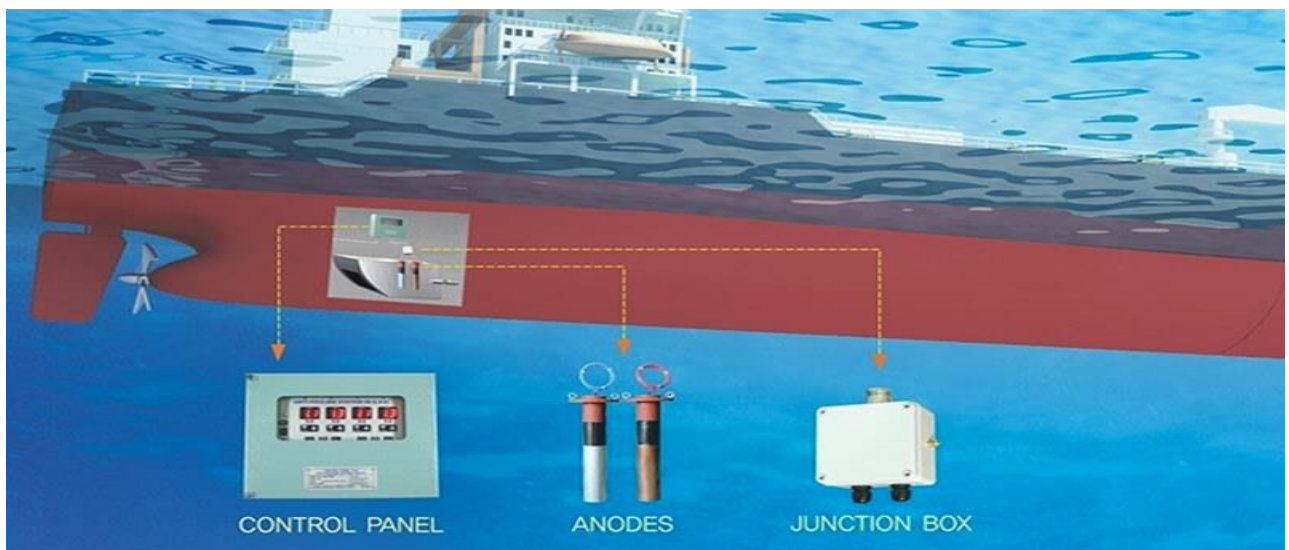
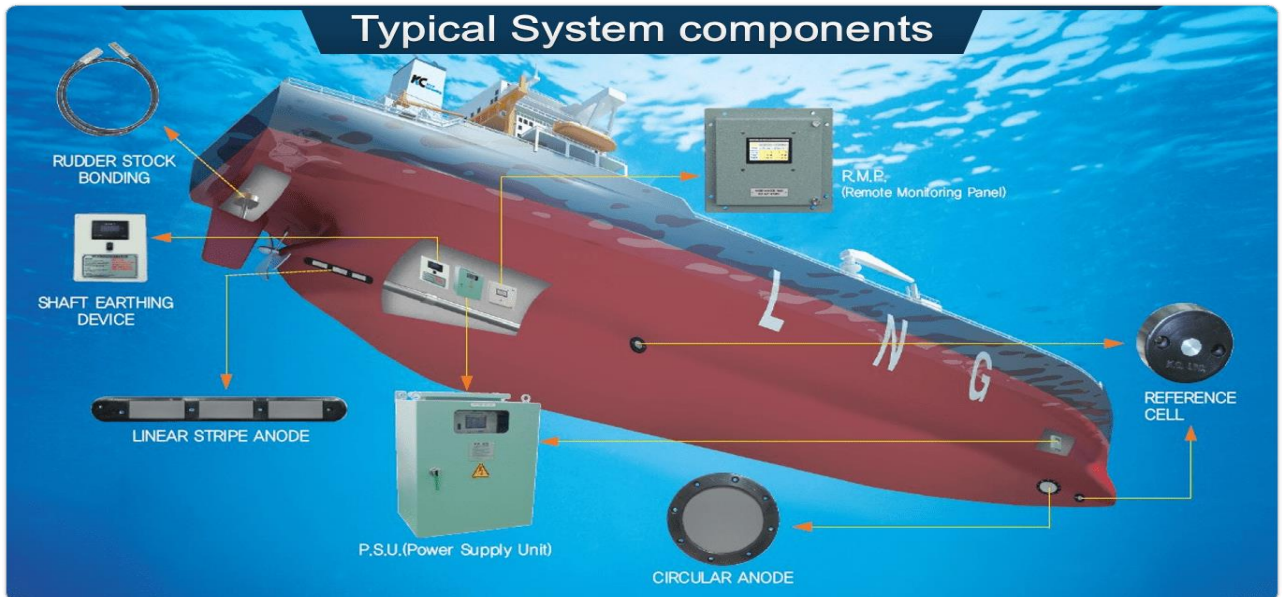




# VII. HULL & DECK EQUIPMENT

## 38. ICCP & Antifouling

\* **Origin:** EU, Korea



# VIII. ELECTRIC EQUIPMENT

## 39. Main switchboard

\* **Origin:** Korea, China, Viet Nam, EU

\* **Specifications:**

- Rated Voltage (Ue):  
220~230/380~415/690V AC
- Hertz: 50/60 Hz
- Max I (A): Max 6300A
- Height (mm): 1600~2100 mm
- Width (mm): 1200~10000 mm
- Depth (mm): 400~1200 mm
- Standard: IEC 60947-2, IEC61641, IEC 60068-2-11, IEC 68-2-30, IEC60439-1
- Protocol: Ethernet, Modbus SL, Profibus DP, DeviceNet, CanOpen

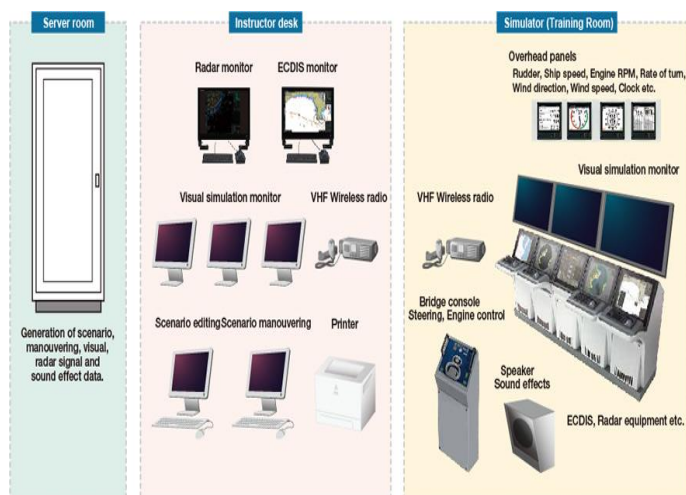
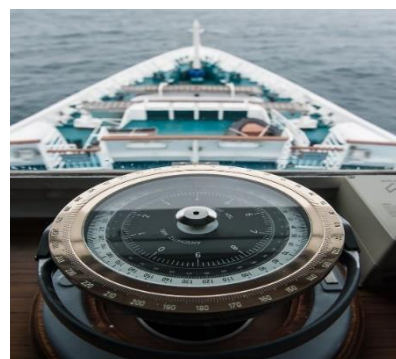


# VIII. ELECTRIC EQUIPMENT

## 40. Navigation

\* **Origin:** Korea, Sweden, Japan, EU, USA

\* **Certificate:** IMO, BV, LR, ABS, ect.

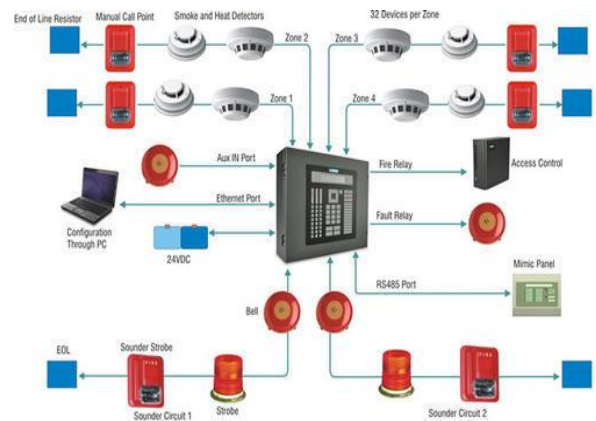
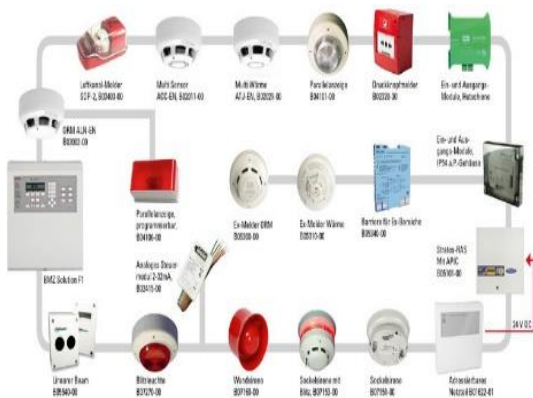




# VIII. ELECTRIC EQUIPMENT

## 41. Fire alarm detection

\* **Origin:** Viet Nam, Sweden, Korea,



### 42. Lighting fixtures

\* **Origin:** EU/ USA

\* **Type:**

- Compact fluorescent bracket light,
- Incandescent pendant light,
- Fluorescent flood light.

\* **Specifications:**

- Model: FB11-PSCG, FB11-PSCS, IP-24BNEG, FL213WS-206UWCF
- Capacity: 11W, DC 24, 13W x 2
- Length (mm): from 134 to 328 mm
- Width (mm): from 92 to 145 mm
- Height (mm): from 141 to 275 mm
- Weight (kg): about 1.6 to 5.3 mm



### 43. Electric cable

\* **Origin:** Korea, China

\* **Cable Designation:**

FA- DPYC, SPYC, TPYC,  
DPYC, TTPYCSLA, FA-  
SPYC, FA-TPYC, FA-  
MPYC, Cu/NR/NR, RG8AU

\* **Application Standard:**

- Design guide: JIS C 3410 (2010)
- Flame retardan : IEC 60332-1  
: IEC 60332-3

category A (FA- Cable only)

- Max. rated conductor temperature:  
90°





# MAIN PARTNER



MARINE DEVELOPMENT IS OUR FUTURE

# MAIN CUSTOMER



MARINE DEVELOPMENT IS OUR FUTURE

# SERVICE CONTACT

## Head Office

No. 159A Vu Chi Thang, Nghia Xa, Le Chan, Hai Phong, Viet Nam

Tel.: +84 2256 290938

Fax: +84 2253 789617

### 1. Mr. Vu Van Huynh – General Director

Email: [ceo@vishipcorp.com](mailto:ceo@vishipcorp.com)

Website: [vishipcorp.com](http://vishipcorp.com)

Hotline: +84 918 552 569

### 2. Mr. Khoa Nang Thuong – Vice General Director

Email: [ibrahim.khoa@vishipcorp.com](mailto:ibrahim.khoa@vishipcorp.com)

Hotline: +84 779 919 111







MARINE DEVELOPMENT IS OUR FUTURE  
VISHIP MARINE DEVELOPMENT CO., LTD

Headquarters

No. 159A Vu Chi Thang, Nghia Xa, Le Chan, Hai  
Phong, Vietnam

Tel: +84 2256 290938

Fax: +84 2253 789617

Website: [vishipcorp.com/](http://vishipcorp.com/) \* Email:

[ceo@vishipcorp.com](mailto:ceo@vishipcorp.com)